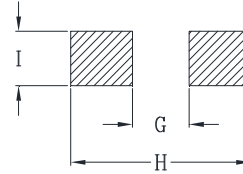
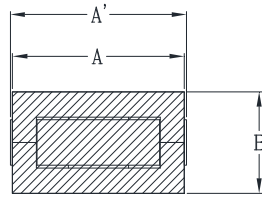


# CYNTEC CO., LTD.

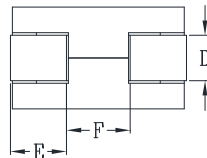
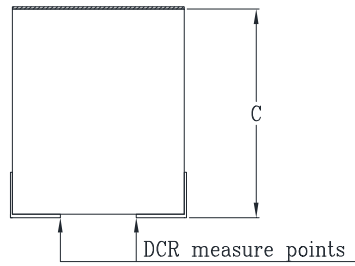
## 乾坤科技股份有限公司

### HCME0995 Series

#### Mechanical dimensions



Suggested PWB Layout



UNIT : mm  
 A' = 9.0 MAX  
 A = 9.0±0.3  
 B = 5.0 MAX  
 C = 9.65 MAX  
 D = 2.4  
 E = 2.9  
 F = 3.2  
 G = 3.9  
 H = 10.2  
 I = 2.9

#### Electrical Characteristics @ 25°C, 100kHz, 1V

Delta P/N	L (nH) ± 15%	Li (nH) MIN	DCR (mΩ) ± 10%	Isat <sup>1</sup> (A)			Ir <sup>2</sup> (A)
				25°C	100°C	125°C	
HCME0995-101	100	70	0.125	90	73	67	63
HCME0995-151	150	105		61	49	45	
HCME0995-331	330	231		23	19	17	

1. Isat is the DC current which causes the inductance drop to Li.
2. Ir is the DC current which causes the surface temperature of the part increase approximately 40 °C.
3. Operating temperature: -40°C to 125°C (Self-temperature rise included).